



# Martins Creek Quarry Update

## INFORMATION SHEET 2

July 2020

## Introduction

This information sheet provides an update on the Martins Creek Quarry Project and associated activities since our last contact with the community. It outlines some of the key Project changes that have been made in light of our discussions with stakeholders and input provided by members of the community. It also provides information on the proposed next steps for the Project and the Amended Development Application and Response to Submissions (ADA & RTS) process.

## Project Update

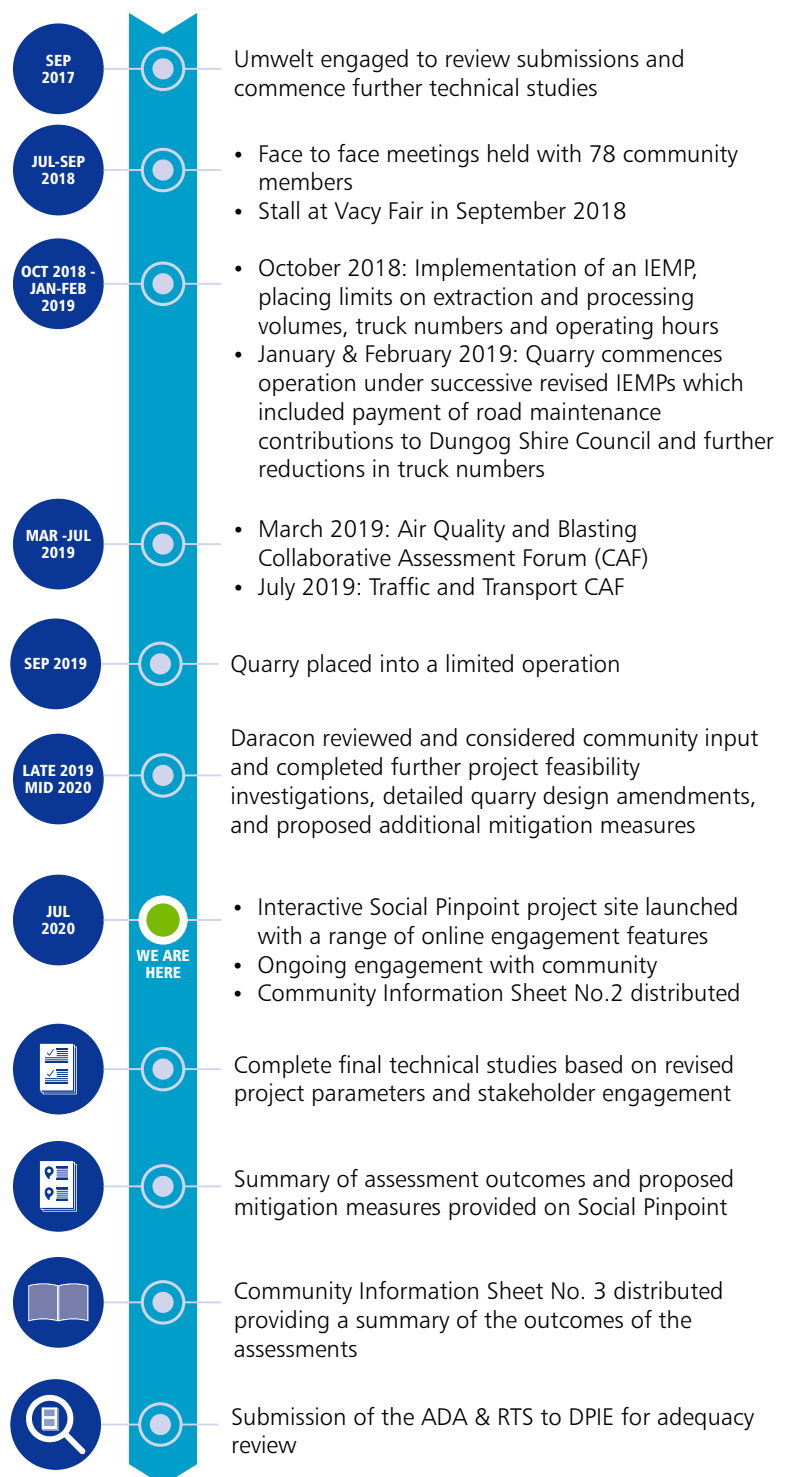
From October 2018, Martins Creek Quarry (the Quarry) operated in accordance with an Interim Environmental Management Plan (IEMP) which placed limits on extraction and processing volumes, truck numbers and operating hours.

The IEMP was revised along the way, to incorporate additional controls. During the period 11 February 2019 to 24 September 2019, the Quarry operated in accordance with the most recent IEMP as agreed to with Dungog Shire Council. This comprised the following key operating and transport parameters:

- Extraction and processing of material limited to 125,000 tonnes per three-month period
- Product transport by road limited to 75,000 tonnes per two-month period, with a maximum of 90 laden trucks per day and 20 laden truck per hour
- No transport of product was permitted on weekends or public holidays

On 24 September 2019, the Quarry was placed into limited operations within the parameters of the existing consent deemed as approved by the Court of Appeal.

## Project Timeline





# What has been happening since quarry operations changed in September 2019?

Since the change to Quarry operations, Daracon have considered community input and have completed further project feasibility investigations, detailed quarry design refinements, and proposed additional mitigation measures. Activities have included further investigations into, and consideration of, the following:

- Resource optimisation and quarry plan refinements to minimise environmental and community impacts
- Commercial and operational elements in relation to operating hours, annual production volumes to be transported by road and peak truck volumes
- Rail spur extension options to optimise rail transport volumes, reduce disturbance footprint and minimise noise
- Rail transport/unloading options
- Noise investigations seeking to further mitigate impact on residents in Station Street and the village of Martins Creek
- Further engineering design work on the intersection of King and Duke Streets Paterson based on community feedback provided at the Traffic and Transport Collaborative Assessment Forum (CAF)
- Further engineering design work on the proposed Quarry access off Dungog Road
- Additional targeted fauna monitoring
- Traffic and transport mitigation measures following community feedback at the Traffic and Transport CAF

# Key Project Changes

Since the EIS for the Original Project was publicly exhibited in late 2016, Daracon has committed to a number of key Project changes. Some of these proposed changes were communicated in our previous information sheet in June 2018 and through consultation activities undertaken at that time. They included key Project design changes and additional mitigation and management measures to minimise the Project's environmental and social amenity impacts such as reductions in proposed extraction limits, changes to Quarry operating hours and truck movements.

Following further community engagement and input provided during late 2018 and 2019 and the change to Quarry operations in September 2019, Daracon has undertaken further quarry planning and design activities to optimise use of the existing resource and minimise environmental and community impacts.

As a result, the Revised Project now includes a number of further amendments and improvements including:

- Reduced road transportation volumes and peak hourly truck movements
- Refined operational hours
- Reduced proposed Project disturbance footprint
- Reduced proposed Quarry operation approval term, to 25 years from 30 years

A summary of these are outlined below with additional information available for viewing online at

<https://umwelt.mysocialpinpoint.com/martins-creek-quarry>





| Key feature   | Original Project<br>(exhibited 2016)            | Revised Project<br>(2018)   | Revised Project<br>(2020)   |
|---|---|---|---|
| <b>Extraction and transport limits</b>                    |   |   |   |
| Quarry operation approval term                            | 30 years  | No change   | 25 years  |
| Quarry extent   | Proposed additional disturbance 28.2 ha         | Proposed additional disturbance 30.5 ha (including new access road)   | Proposed additional disturbance 17 ha (including new access road) - a reduction of 13.5 ha  |
| Extraction limit  | 1.5 Mtpa  | 1.1 Mtpa  | No change   |
| Road transport limit                                      | Up to 1.45 Mtpa by road                         | Maximum 900,000 tpa by road   | Maximum 500,000 tpa by road   |
| Rail transport limit                                      | Up to 50,000 tpa by rail                        | Material will also be transported by rail   | Up to 600,000 tpa by rail. Subject to market requirements at a later date, Daracon may seek DPIE approval to increase the amount transported by rail, on a campaign basis.  |
| Truck limits per day                                      | Maximum 215 laden trucks per day                | Maximum 140 laden trucks per day  | No change   |
| Truck limits per hour                                     | Maximum 40 laden trucks per hour                | Maximum 30 laden trucks per hour  | Maximum 25 laden trucks per hour  |
| <b>Hours of operation</b>                                 |   |   |   |
| In pit quarry operations                                  | 6.00 am to 6.00 pm Monday to Saturday           | <ul style="list-style-type: none"> <li>7.00 am to 6.00 pm Monday to Saturday</li> <li>No in-pit mobile crushing in the West Pit</li> </ul>  | No change   |
| Evening/night crushing and processing activities          | 6.00 am to 10.00 pm                             | <ul style="list-style-type: none"> <li>No operations during evening period (6.00 pm to 10.00 pm)</li> <li>No operations during night period (10.00 pm to 7.00 am)</li> <li>No crushing or processing prior to 7.00 am Monday to Saturday</li> </ul> | No change   |
| Sales loading and stockpiling for road transport          | 5.30am to 7.00pm Monday to Saturday             | <ul style="list-style-type: none"> <li>No loading of product trucks prior to 7.00am Monday to Saturday</li> <li>No Quarry trucks through Paterson prior to 6.45am Monday to Saturday</li> </ul>   | <ul style="list-style-type: none"> <li>No loading of product trucks prior to 7.00am Monday to Friday</li> <li>No Quarry trucks through Paterson prior to 6.45am Monday to Friday</li> <li>No Quarry sales on Saturday</li> </ul>  |
| Loading and overnight parking                             | Loading and parking of trucks on site overnight | Unladen trucks to return to the Quarry between 6.00 pm and 7.00 pm Monday to Friday to park in the Quarry overnight and be loaded during this time in readiness for departure from 7.00 am the following morning                                    | Provision for up to 10 unladen Daracon trucks (not contractors) to return to the Quarry between 6.00 pm and 7.00 pm Monday to Friday to park in the Quarry overnight and be loaded during this time in readiness for departure from 7.00 am the following morning.<br>(Note: in the case of trucks loaded on Friday evening, departure will be no earlier than 7.00 am Monday morning.) |
| Train loading and rail transport                          | 24 hours / 7 days per week                      | No change   | No change   |
| General Maintenance and Environmental Management Controls | Not specified                                   | 24 hours / 7 days per week as required  | 24 hours / 7 days per week as required, including vehicles/trucks moving in and out of the site for maintenance purposes, as required   |

The additional Project changes further reduce environmental and social impacts compared to those associated with the Original Project.

## Changes to how we inform and engage

As noted above, during 2019 Daracon and Umwelt, together with relevant technical specialists held a number of subject specific Collaborative Assessment Forums (CAFs) with members of the community to discuss outcomes of technical studies that had been undertaken to date on air quality, blasting and traffic and transport.

Daracon has employed an experienced community engagement specialist to facilitate ongoing community engagement and to be a point of contact for the community.

Daracon is committed to continuing this dialogue with interested members of the community and other stakeholders and keeping you informed. As we progress through the assessment process we would particularly like to:

- Hear your views on the Revised Project
- Continue to share the outcomes of the technical studies as they are completed
- Identify proposed management and mitigation strategies and seek your input into additional possible strategies to address identified impacts.

Given the recent COVID-19 pandemic and the associated need for social distancing, we have made some changes to the way in which we engage with the community on the Martins Creek Quarry Project to allow for continued stakeholder and community input on Project matters.

## What does engagement look like for now?

We have adopted an online engagement platform as a key tool that will allow community members to:

- Access the latest information about Project design changes and technical study outcomes to date
- Participate in discussion forums and surveys
- View project presentations

Information regarding the noise, economic and social assessments and current proposed mitigation measures will be primarily provided through our Social Pinpoint site with interested community members invited to provide feedback on outcomes and have input into proposed management measures. Other updates to assessments and proposed mitigation strategies, following community input, will also be provided on the Social Pinpoint site. We are excited about the opportunity that this platform provides for enhanced transparency and continued engagement.

We will also continue to engage in targeted discussions with particular stakeholder groups and interested members of the community as appropriate and to seek feedback on specific issues and aspects of the Project.

## How can I be involved?

We want to continue to consult and involve the community as we continue through the assessment process. If you would like to access Project information and have your say please visit: <https://umwelt.mysocialpinpoint.com/martins-creek-quarry> and follow the links.

Daracon and Umwelt understand that the use of online mechanisms for engagement is not possible for all members of our community. Therefore, if you would like information delivered to your letterbox or to have a personal discussion with a member of the Project team, please contact us on the details provided below.



## Thank you.

We look forward to your further input and feedback as the Project progresses.

### Contact information



Louise Neville  
Community Liaison Representative

m: 0407 907 755  
e: [louise.neville@daracon.com.au](mailto:louise.neville@daracon.com.au)



Sarah Bell  
Senior Social Consultant

m: 0436 674 277  
e: [social-team@umwelt.com.au](mailto:social-team@umwelt.com.au)