



Buttai Quarry

Community Consultative Committee Meeting
November 2023

- Issues arising from previous meetings;
- Summary of operations;
- Overview of quarry operations:
 - Air quality;
 - Noise;
 - Flora and Fauna management;
 - Blast Management;
 - Incidents / Complaints
 - Rehabilitation;
- Summary of the temporary increase in laden truck movements from the quarry DA;
- Resource Recovery Facility (RRF) update including Old Buttai Rd upgrade matter;
- Planned quarry activities for 2024;

- Previous meeting minutes reviewed with any outstanding actions noted and agreed;
- Kate Baartz to allocate actions and responsibilities for all ongoing items;

- Quarrying continuing in Lot 76;
- Crushing and stockpiling of quarried materials continuing;
- The quarry continues to provide various essential construction materials for the local construction industry and government sectors;
- 2023 has been quite busy from a quarrying perspective with the capacity to export up to 100 laden trucks per day greatly assisting our capacity to supply local projects efficiently;
- A total of 7 blasts have been conducted so far during 2023;

- 1 external site environmental inspection occurred during 2023 so far (Rubicon);
- 1 external site inspection by the Resource Regulator during 2023 so far;
- 2 Internal Environmental Audits occurred during 2023 so far;

- **Air quality**
 - Assessed against NSW EPA Annual Average Criterion ($4 \text{ g/m}^2/\text{month}$) for Dust Deposition Gauges (DDG);
 - All annual average results received for all DDG's were below the $4 \text{ g/m}^2/\text{month}$ threshold including the Buttai Barn result;
 - We continue to report the elevated results obtained at 'Buttai Barn' and 'Buttai Barn #2, however they intermittently appear to be erroneous and inconsistent with the adjacent DDG monitors;

Overview of quarry operations

Air quality monitoring results January to September 2023

	D1 - Tetratheca	D2 - Norma	D3 - Buttai Barn	D4 - Bishop	D5 - Buttai Barn #2
16/12/22 to 13/01/23	0.8	1.1	0.5	0.8	0.5
13/01/23 to 10/02/23	5.7	1.5	0.8	0.7	0.7
10/02/23 to 10/03/23	1.3	1.2	0.4	0.3	0.7
10/03/23 to 11/04/23	1.1	1.2	0.6	3.9	3.4
11/04/23 to 09/05/23	3.1	5	0.6	1.1	1.7
09/05/23 to 06/06/23	0.8	0.8	1.3	1.3	0.7
06/06/23 to 04/07/23	1.1	0.5	2.2	1.3	0.6
04/07/23 to 01/08/23	0.6	0.4	5.6	0.7	0.3
01/08/23 to 29/08/23	0.6	0.8	2	0.9	0.5
29/08/23 to 26/09/23	0.7	1.4	1.7	0.9	0.7
Annual Average	1.45	1.50	1.44	1.15	0.9

- **Noise**

- Noise monitoring is undertaken by Spectrum Acoustics who've conducted 3 monitoring sessions during 2023 so far. This is in accordance with the noise management plan;
- All results obtained were within the specified limits;

Noise monitoring results for 2023 so far

Table 1 Buttai Quarry Noise Monitoring Results – 27 February 2023				
Location	Time	dB(A) L ₁₀	Wind speed/ direction	Identified Noise Sources
1	10:55 am	48	1.0 m/s SE	Birds & insects (48), plant noise ¹ (33), BQ occasionally audible
2	11:40 am	41	1.0 m/s SE	Birds & insects (39), birds (36), BQ inaudible
3	11:17 am	42	1.0 m/s SE	Birds & insects (42), plant noise ¹ (25), BQ occasionally audible

¹ not quarry related (see text)

At locations 1 and 3 the measurements were influenced by noise from plant operating to the east of the monitoring locations. This is the opposite direction to BQ. The noise was possibly related to land clearing or construction activities.

Overview of quarry operations

Table 1

Buttai Quarry Noise Monitoring Results – 11 May 2023

Location	Time	dB(A) L₁₀	Wind speed/ direction	Identified Noise Sources
1	10:30 am	41	1.5 m/s N	Birds (40), traffic (34), BQ inaudible
2	11:12 am	42	1.0 m/s N	Birds (40), construction noise (35), traffic (32), BQ inaudible
3	10:52 am	40	1.0 m/s NE	Birds & frogs (40), traffic (30), BQ (28)

Table 1

Buttai Quarry Noise Monitoring Results – 17 August 2023

Location	Time	dB(A) L₁₀	Wind speed/ direction	Identified Noise Sources
1	11:32 am	39	2.5 m/s N	Birds (36), traffic (36), BQ (24)
2	10:50 am	36	2.5 m/s N	Birds (33), traffic (32), BQ (22)
3	11:10 am	36	1.9 m/s N	Birds & frogs (35), BQ (27)

- **Flora and Fauna**

- The quarry footprint and extent of clearing was altered along the northern and eastern edges of the quarry pit;
- Wild Thing Ecological services were again engaged to inspect and plan for clearing operations whilst also assisting during vegetation removal activities;
- Maintenance of fire trails and boundary lines continued to occur during 2023;
- Ongoing consultation with the Rural Fire Service (RFS) continues to occur as necessary;

- **Blast Management**

- 7 blasts have been conducted during 2023 so far with all being within the allowable limits;
- Blast monitoring results are shown on the next slide;

Overview of quarry operations

Blast monitoring results for 2023 so far

			Norma Brookes		Lings Rd		Buttai Barn	
Date	Time	Blast No.	PPV mm/s	O/pressure dBL	PPV mm/s	O/pressure dBL	PPV mm/s	O/pressure dBL
18/01/2023	13:39	P_109	0.55	106.1	No trigger	No trigger	No trigger	No trigger
20/02/2023	14.:03	P_110	No trigger	No trigger	0.51	106.1	0.46	104.7
3/04/2023	11:46	P_111	0.59	107.9	0.49	102.4	No trigger	No trigger
7/06/2023	12:47	P_112	0.99	107	0.82	110.8	0.52	105.7
10/08/2023	12:28	P_113	1.04	111.2	0.62	108.7	No trigger	No trigger
29/09/2023	11:25	P_114	No trigger	No trigger	No trigger	No trigger	0.56	108.8
27/10/2023	12:06	P_115	No trigger	No trigger	0.63	102.5	0.59	98.5

- **Incidents / complaints**

- Apart from some slightly elevated DDG results, there were no significant incidents or complaints during 2023 so far other than trespassing and the presence of a Cleanaway truck on Lings Rd;

- **Rehabilitation**

- Maintenance of the rehabilitation of Bench 2 and 3 continues during 2023;
- Maintenance of various other rehabilitated areas also occurred during 2023;
- Image overleaf show the progress of planted areas including the additional planting that occurred in early 2023 on Bench #2 (top-down planting);

Overview of quarry operations



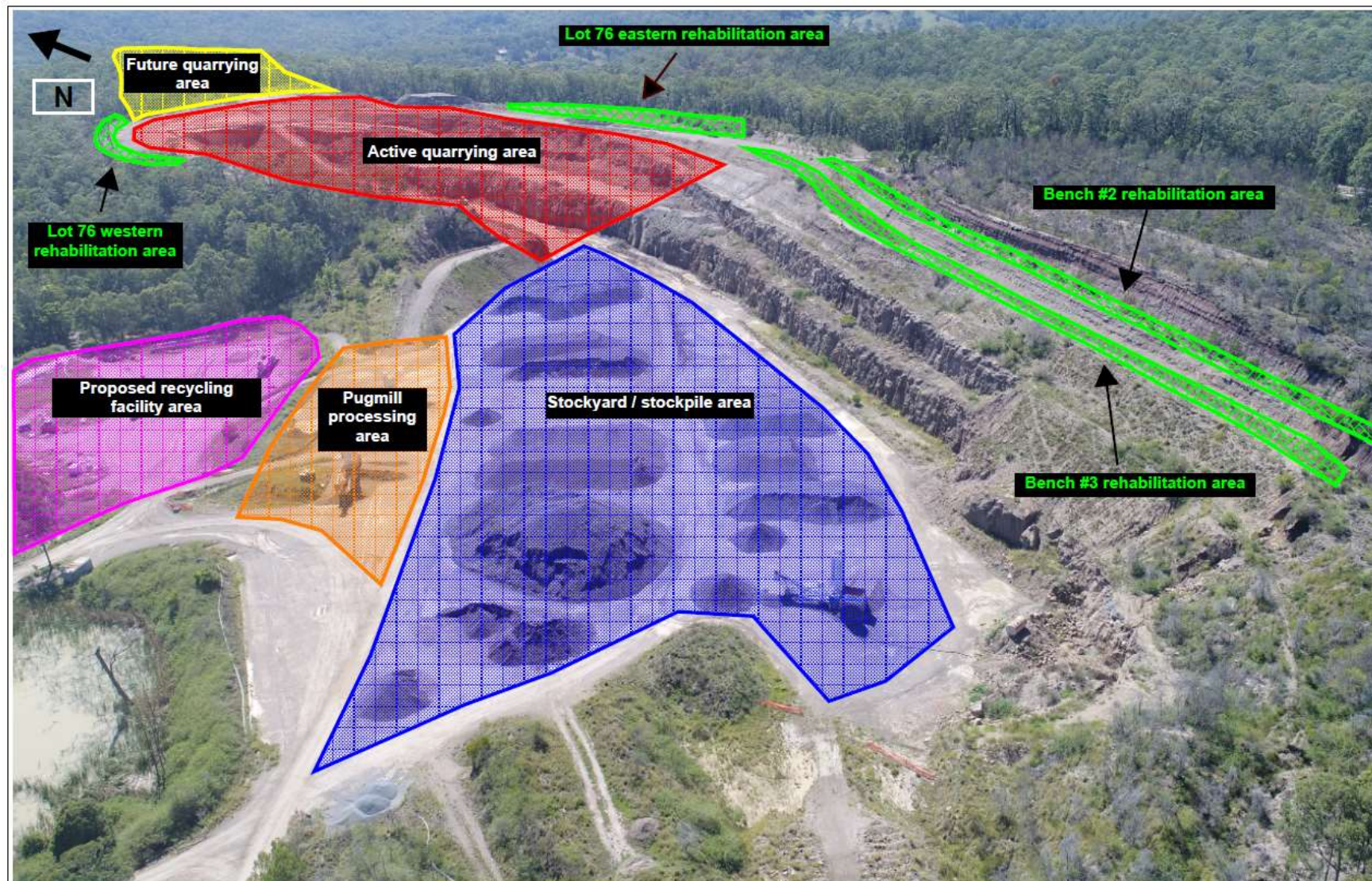
Overview of quarry operations



Overview of quarry operations



Overview of quarry operations



- Following an extensive consultation process during late 2022 and the subsequent submission of a 'standalone DA' to temporarily increase in laden truck movements from the quarry (60 laden to 100 laden), we received approval to undertake this task in May 2023;
- The 'standalone DA' commenced on the 7th June 2023, has a specific duration for its operation and requires Daracon to submit quarterly reports including, but not limited to a daily summary of laden truck movements;
- The first quarterly report was submitted to Council on the 22nd September 2023, with a copy of the laden truck details shown on the next slide;

Proposal to increase laden trucks

Laden truck movements from Buttai quarry for the period 7/6/23 to 7/9/23	
Date	Laden truck count
7-Jun	88
8-Jun	87
9-Jun	77
14-Jun	20
15-Jun	23
16-Jun	11
19-Jun	37
20-Jun	39
21-Jun	63
22-Jun	86
23-Jun	40
26-Jun	71
27-Jun	70
28-Jun	54
29-Jun	44
30-Jun	73
3-Jul	59
4-Jul	28
5-Jul	58
6-Jul	58
7-Jul	58
10-Jul	44
11-Jul	84
12-Jul	53
13-Jul	76
14-Jul	39
17-Jul	39
18-Jul	53
19-Jul	58
20-Jul	58
21-Jul	35
25-Jul	83

26-Jul	98
27-Jul	75
28-Jul	78
31-Jul	41
1-Aug	46
2-Aug	78
3-Aug	86
4-Aug	85
7-Aug	12
8-Aug	22
9-Aug	56
10-Aug	26
11-Aug	33
14-Aug	1
15-Aug	4
16-Aug	32
17-Aug	89
18-Aug	36
21-Aug	74
22-Aug	78
23-Aug	25
24-Aug	28
25-Aug	67
26-Aug	15
28-Aug	32
29-Aug	35
30-Aug	36
31-Aug	29
1-Sep	45
4-Sep	42
5-Sep	64
6-Sep	67
7-Sep	40

- The RRF was approved in June 2021;
- The Old Buttai road upgrade design was rejected by the Council Traffic Committee on the 26th July 2023;
- We therefore recently arranged an extraordinary meeting of the CCC to discuss the options going forward;
- The CCC supported the current arrangement at the intersection of Old Buttai Rd and the quarry access road, which gives quarry vehicles priority;
- Councilors subsequently raised a 'notice of motion' to be raised at the next Council meeting;
- As usual, we'll keep the CCC informed as this matter progresses;

- Further extraction and sale of quarried materials;
- Continued dust, noise and blast monitoring;
- Continued maintenance of rehabilitation work as required;
- Progression of the Resource Recovery Facility (RRF);
- Continuation of the temporary increase in laden truck movements from the quarry DA;

Further questions?